

WETLANDS LIFE DAY

Years 4,5 & 6, ages 8-11

"Our planet faces a biodiversity crisis on a scale never seen before. And nowhere is this more acute than in the world's rivers, lakes and wetlands. But looking after our wetland wildlife could help solve the wider problem." www.wwt.org.uk



Beavers are being reintroduced into the wild in England, Scotland & Wales. They chop down trees with their teeth to make dams across streams & rivers to create wetlands to live in.

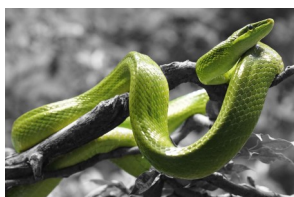


Find the **types** & **examples of living things** in the wordsearch and write the right words under each picture. Be careful not to mix up the snake and the eel!



Type: _____

Example: _____



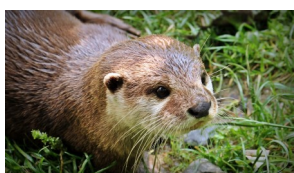
Type: _____

Example: _____



Type: _____

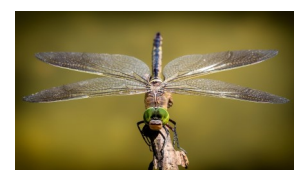
Example: _____



Type: _____

Example: _____

B	T	N	A	M	R	S	N	N	L	B	F	N	M
A	E	L	L	O	E	M	Y	T	T	C	I	N	A
N	A	R	M	S	P	A	S	S	M	I	Y	L	T
S	S	O	M	S	T	M	M	S	B	N	S	T	A
Y	N	S	A	G	I	M	S	M	E	S	A	S	F
L	R	N	T	R	L	A	M	W	N	P	A	P	I
F	E	A	F	A	E	L	T	A	L	B	P	G	S
N	T	I	P	S	S	S	E	M	I	L	M	M	H
O	T	B	F	S	I	N	S	R	A	F	D	M	S
G	I	I	B	S	O	P	D	N	E	O	S	I	D
A	B	H	E	N	T	S	T	N	N	A	F	T	T
R	L	P	I	A	T	S	R	I	I	E	W	L	N
D	E	M	G	K	E	M	A	I	R	M	N	O	A
N	E	A	S	E	R	F	S	T	C	E	S	N	I



Type: _____

Example: _____



Type: _____

Example: _____



Type: _____

Example: _____

Types of living things

Mammals

Birds

Plants

Reptiles

Amphibians

Fish

Examples of living things

Grass Snake

Dragonfly

Eel

Otter

Moss

Newt



Happy Summer Holidays

from everyone at Let's Learn Energy

All photos: Pixabay.com

Published by Let's Learn Energy 2020-07-20, creators of the World of Energy workshop

E: puzzles@letslearnenergy.co.uk | [@letslearnenergy](https://www.instagram.com/letslearnenergy)

Copyright LetsLearnEnergy Ltd 2020